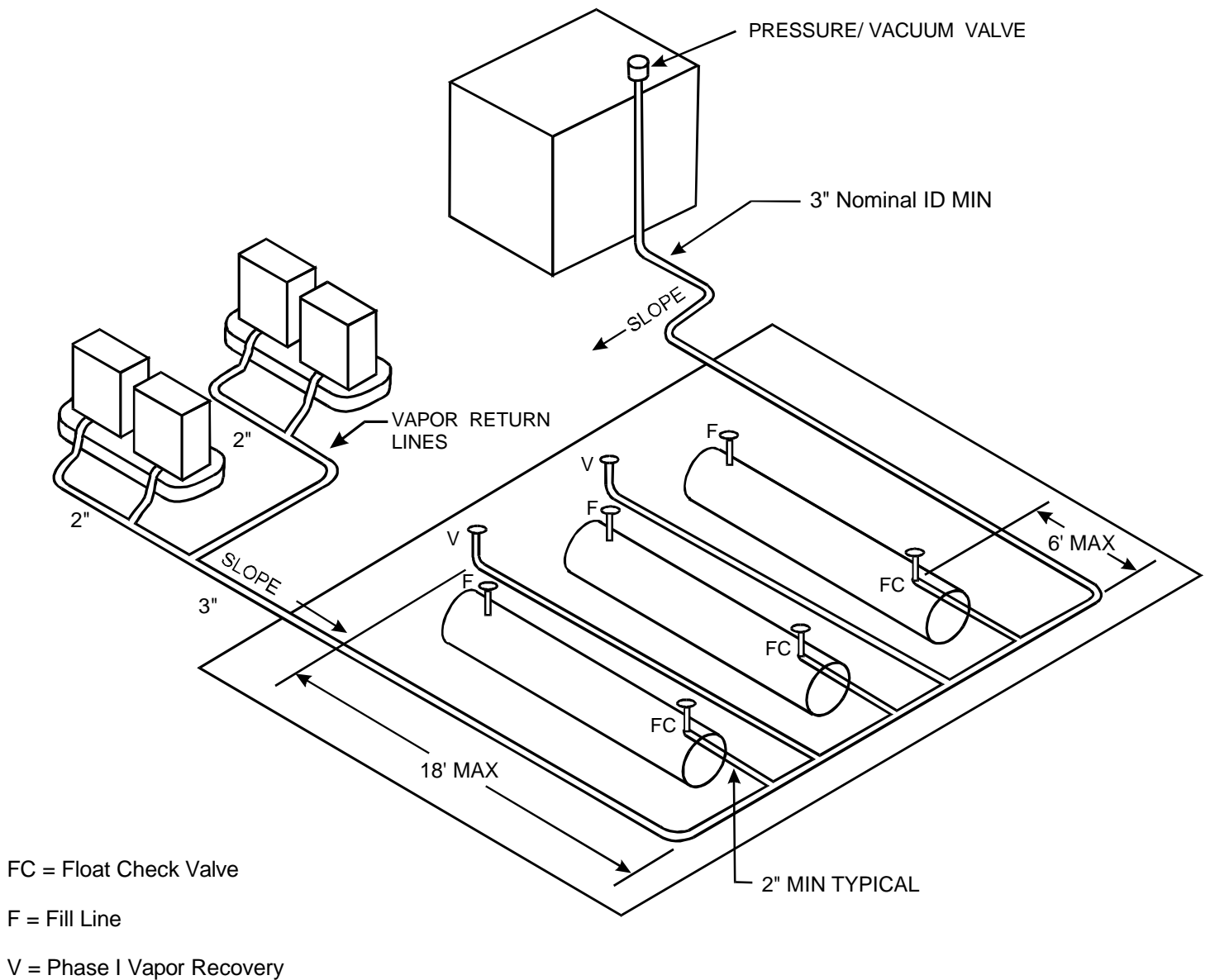


# Executive Order G-70-153-AD

## Exhibit 2

### Figure 2A-2

#### Typical Installation of the Dresser Wayne WayneVac Phase II Vapor Recovery System



Note: 1. All Vapor/Vent Lines are 2" Nominal ID Minimum Except as Noted

2. Slope: 1/8" per foot Min.  
1/4" per foot Preferred

3. Maintain 2'0" Clearance Between Fill Line and  
Phase I Vapor Return Line to Delivery Truck