

## GETTING STARTED WITH THE EMISSION INVENTORY MODULE

This section provides information for new users.

### 1. Installing the HARP Emission Inventory Module

Before installing the Emission Inventory Module (EIM) on your computer, please review the system requirements. If you need technical support, please contact the Air Resources Board's Stationary Source Division, Emission Assessment Branch at (916) 323-4327 or send an email to [harp@arb.ca.gov](mailto:harp@arb.ca.gov).

#### **Can I install the EIM with Older Version of HARP 1.x?**

The EIM can be installed to a computer with an older version of HARP.

#### **Default Installation Folder**

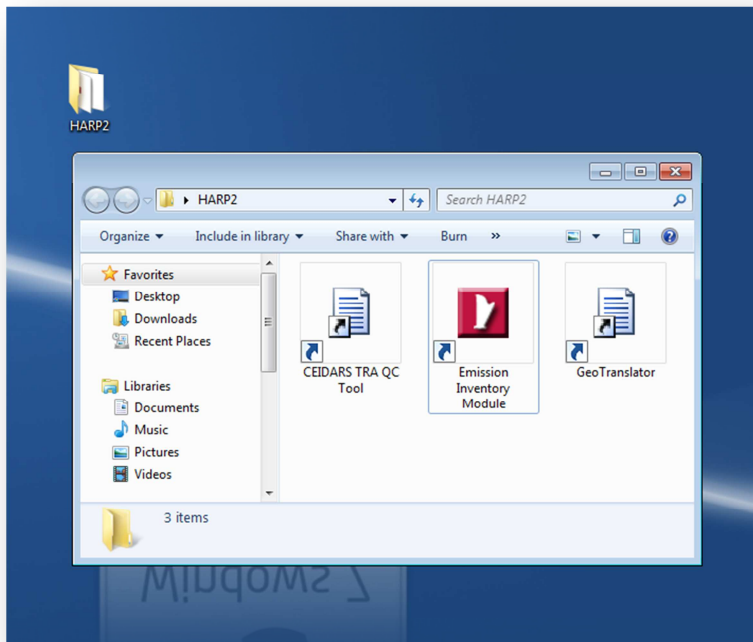
The default destination folder is C:\HARP2. It is recommended that you install to the default destination folder.

#### **Desktop Shortcuts**

During the installation process, the installer will create a HARP folder on your desktop. The HARP folder will contain shortcuts to the EIM, a tool for validating CEIDARS transaction files (See Section 15.g), and a tool for converting coordinates from one system to another (See Section 15.e).

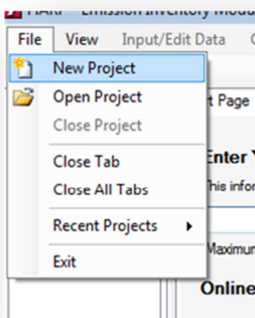
### 2. Opening the Program

To open the EIM, open the HARP2 folder located on your desktop and double-click on the ***Emission Inventory Module*** icon.

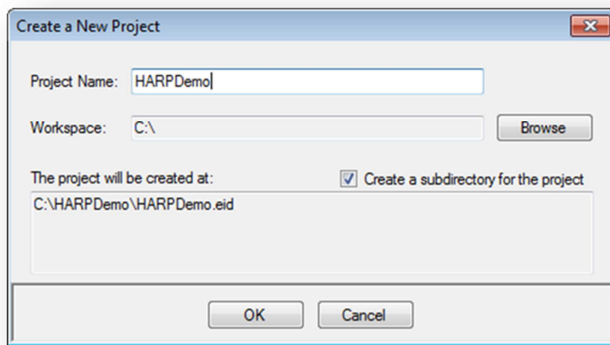


### 3. Creating a New Project

To create a new project, click **FileNew Project** in the main menu. For more information on what a project is, see Section 5.



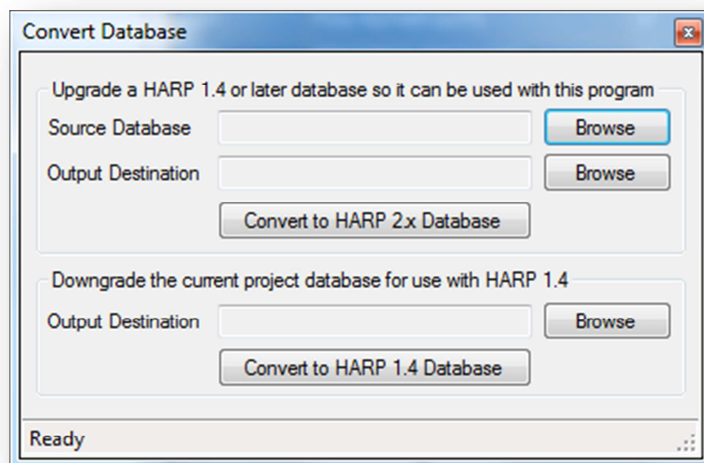
Enter a project name and click **OK**.



#### 4. Importing Data from the Previous HARP Version

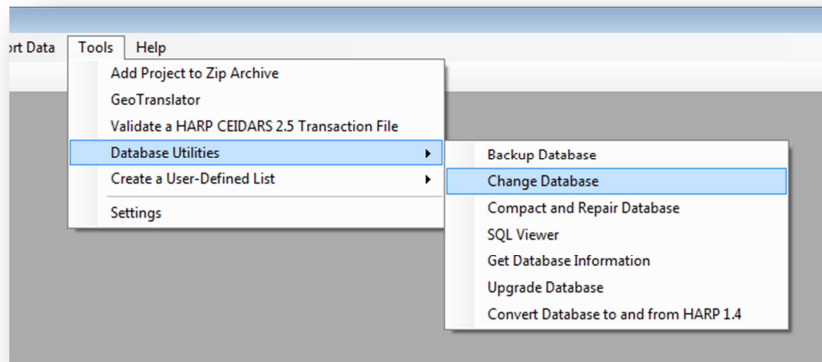
If you want to import your facility and emission inventory database from the previous version of HARP, follow the instructions below.

To convert the older database, select ***Tools\Database Utilities\Convert Database to and from HARP 1.4*** in the main menu.

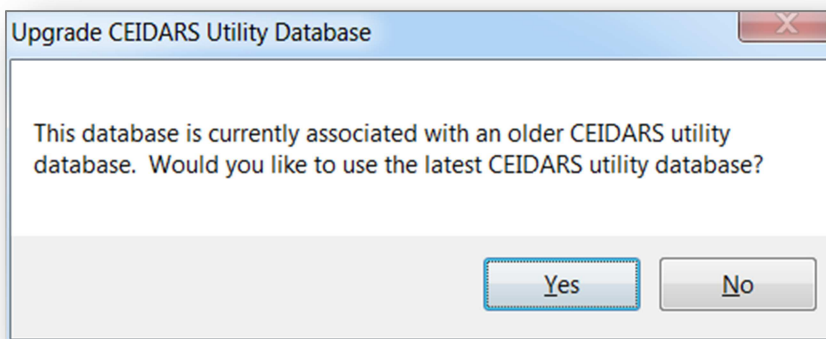


In the ***Source Database*** area, click ***Browse*** and select the older HARP database. Next, choose the output destination and then click ***Convert to HARP 2.x Database***.

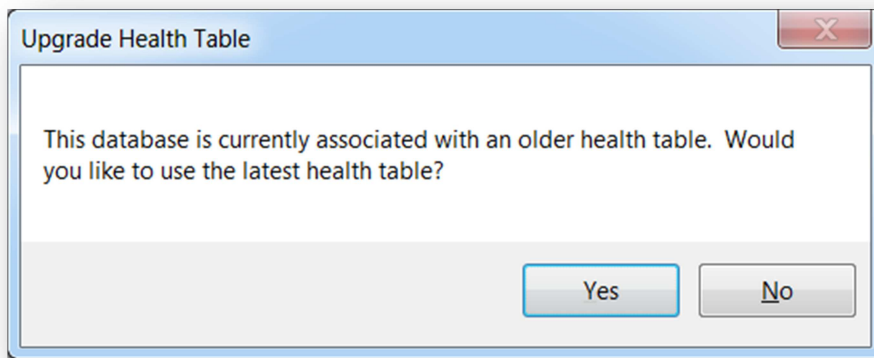
To change to the newly converted database, click **Tools\Database Utilities\Change Database** in the main menu. You can also change the database using the **Project Panel**.



If your project used an older version of CEIDARS utility database, the program will prompt an option to use the latest version of CEIDARS utility database. Please see section 6.b for more information about CEIDARS utility database.



If your project used an older version of the health database, the program will prompt an option to use the latest version of the health database.



## 5. Getting Familiar with the Program

It is best to review the user guide before attempting to use the program. Help files are also available in various areas in the program.

- Section 4 provides an overview of the user interface.
- Sections 5 through 7 provide information about project concepts and database designs.
- Sections 8 through 10 provide information on the data entry screens and how to manually enter data into the program.
- Sections 11 through 14 provide information on how to import, export, query, and create reports.
- Section 15 provides information on advanced features in the program (e.g., importing from an Excel document).

## 6. Training

Training for this program is still being developed. Please sign up on the HARP listserver for updates at [http://www.arb.ca.gov/listserv/listserv\\_ind.php?listname=harp](http://www.arb.ca.gov/listserv/listserv_ind.php?listname=harp)