



State Climate Change Programs

A Presentation to the CAT Public Health Workgroup

Michael McCormick, AICP
 Governor's Office of Planning and Research
 michael.mccormick@opr.ca.gov
 www.climatechange.ca.gov
 www.opr.ca.gov

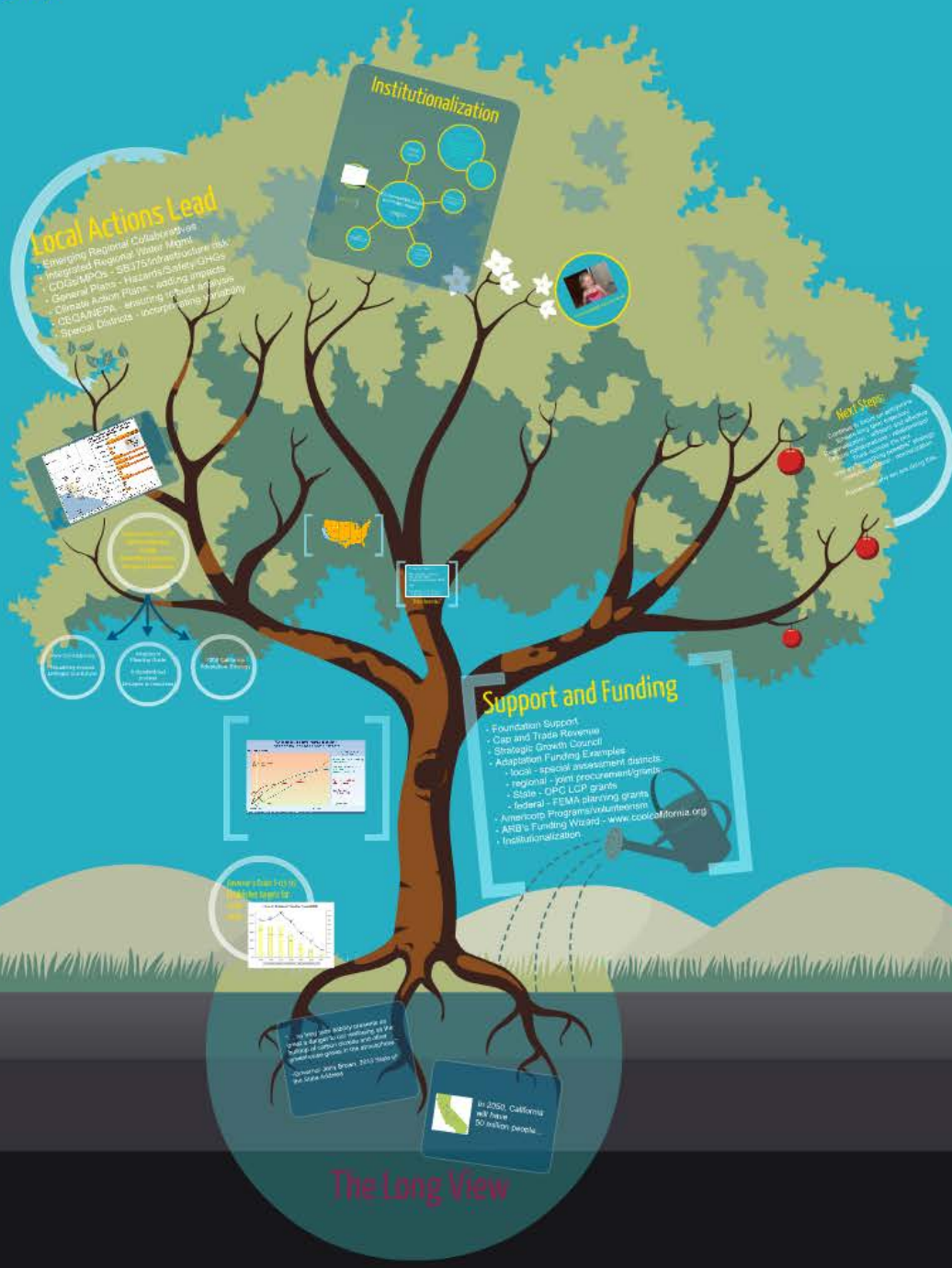




State Climate Change Programs

A Presentation to the CAT Public Health Workgroup

Michael McCormick, AICP
 Governor's Office of Planning and Research
 michael.mccormick@opr.ca.gov
 www.climatechange.ca.gov
 www.opr.ca.gov



“... no long term liability presents as great a danger to our wellbeing as the buildup of carbon dioxide and other greenhouse gases in the atmosphere.”

-Governor Jerry Brown, 2013 State of the State Address



In 2050, California will have 50 million people...

The Long View

“... no long term liability presents as great a danger to our wellbeing as the buildup of carbon dioxide and other greenhouse gases in the atmosphere.”

-Governor Jerry Brown, 2013 State of the State Address





In 2050, California
will have
50 million people...

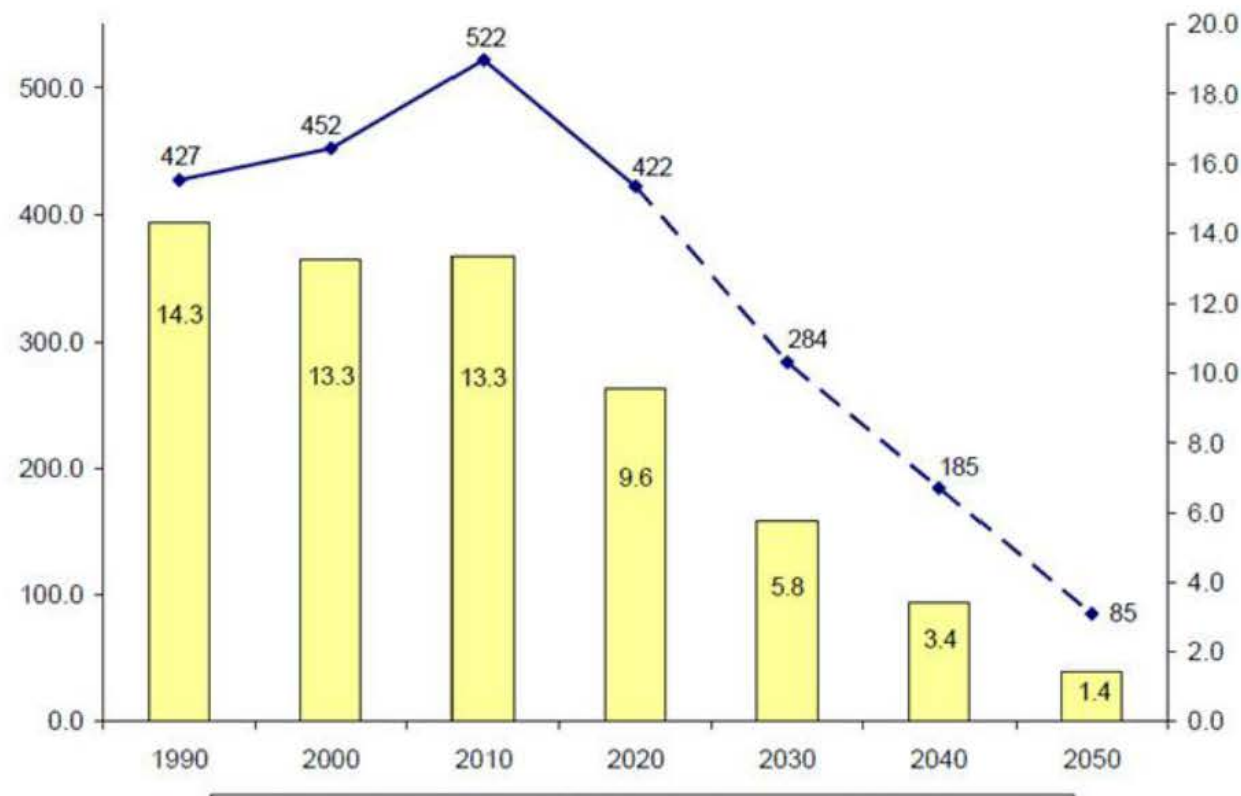
Governor's Order S-03-05

Establishes targets for:

2020

2050

Figure 6: Emissions Trajectory Toward 2050



PER CAPITA ELECTRICITY CONSUMPTION



(Source: US Energy Information Administration)

For example, by 2050...

The vast majority (85%+) of vehicles will need to be zero emission vehicles (ZEVs)

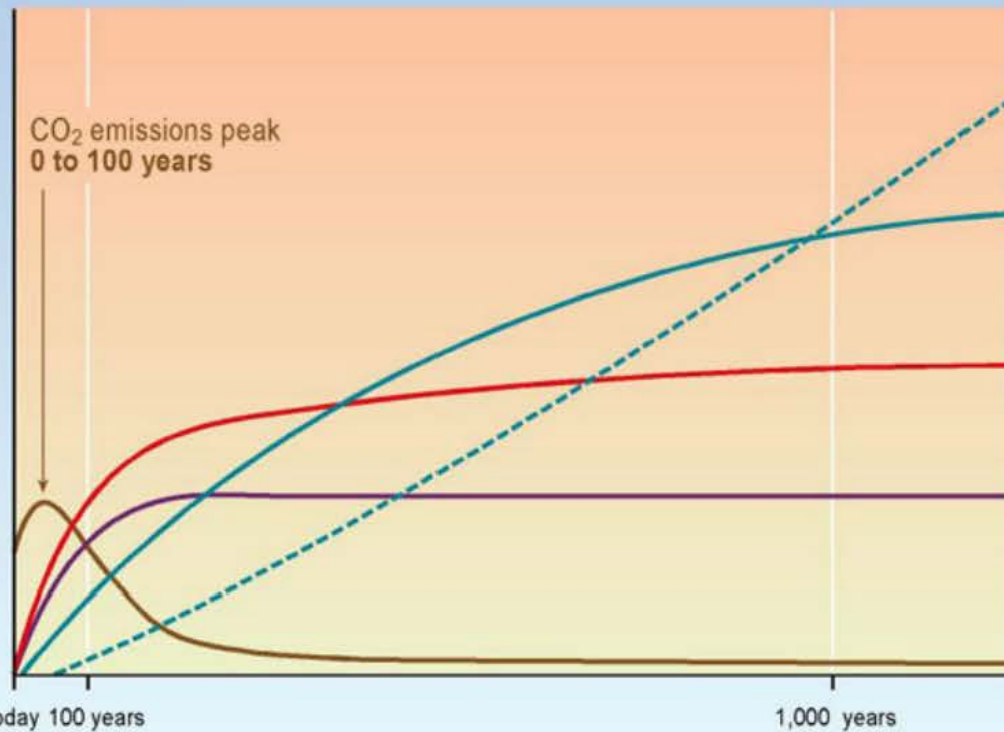
AND

The energy sector will need to eliminate almost all emissions.

"Transformation"

CO₂ concentration, temperature, and sea level continue to rise long after emissions are reduced

Magnitude of response



Time taken to reach equilibrium

Sea-level rise due to ice melting:
several millennia

Sea-level rise due to thermal expansion:
centuries to millennia

Temperature stabilization:
a few centuries

CO₂ stabilization:
100 to 300 years

CO₂ emissions

INTERGOVERNMENTAL PANEL ON CLIMATE CHANGE

Pacific Ocean
Source: UCLA LARC study, 2012; chart based on the mean/av.

Governor's Order S-13-08
California Adaptation
Strategy
Vulnerability Assessments
Interagency Coordination

www.Cal-Adapt.org
Visualizing impacts
Linkages to solutions

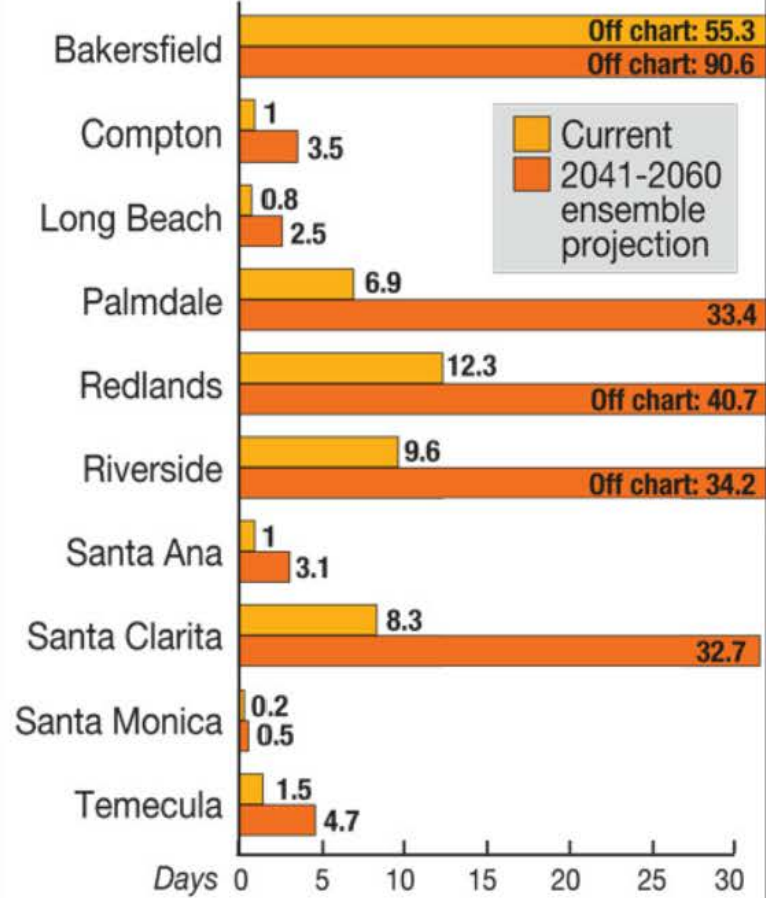
Adaptation
Planning Guide
A standardized
process
Linkages to resources

2009 California
Adaptation Strategy



Current and projected temperature extremes for Southern California

Annual days exceeding 95 degrees F



Source: UCLA LARC study, 2012; chart based on the mean/average projected by the 19 climate models

Local Actions Lead

- Emerging Regional Collaboratives
- Integrated Regional Water Mgmt
- COGs/MPOs - SB375/infrastructure risk
- General Plans - Hazards/Safety/GHGs
- Climate Action Plans - adding impacts
- CEQA/NEPA - ensuring robust analysis
- Special Districts - incorporating variability

Institutionalization



California Adaptation Strategy Update

Concurrent with other
program/policy efforts

State Hazard Mitigation Plan Update

Connection to recovery dollars,
local and regional plans,
general plans

AB32 Scoping Plan Update

Connection to broader State
Planning Priorities

Interim targets

CEQA Administrative Changes Legislative Reform

State efforts that are or will be influencing
local climate change related policy

Document/Process	4th Quarter of 2012	1st Quarter 2013	2nd Quarter 2013	3rd Quarter 2013	4th Quarter 2013	1st Quarter 2014	Mid to late 2014
Environmental Goals and Policy Report							
AB 32 Scoping Plan Update							
Climate Adaptation Strategy Update							
Climate Action Team (CAT) Climate Change Research Plan							
Climate Change 3rd Assessment Report							
Bioenergy Action Plan							
Zero Emissions Vehicle (ZEV) Action Plan							
Climate Adaptation Planning Guide							
California Local Energy Assurance Planning (CaLEAP) Tool							
Integrating Public Health into CAPs							
DWR Climate Action Plan							
Integrated Energy Policy Report							
Zero Emissions Vehicle (ZEV) Readiness Guidebook							
MPO Adaptation Guidance							
Sea-Level Rise Guidance Revision							
Electric Program Investment Charge Investment Plan							
Cap and Trade Investment Plan							
Geoportal Public Access							
Climate Change Consortium for Specialty Crops Report							
Extreme Heat Adaptation Guidance							
SEEC GHG Inventory and Forecast Tools Update							
Indicators of Climate Change in California Report							
State Hazard Mitigation Plan Update							
California Water Plan Update							
Climate Action Plan Technical Advisory							
Sea-Level Rise Guidance LCPs and CDPs							
Governor's Initiative Americorp Program							
General Plan Guidelines Update							
Desert Renewable Energy Conservation Plan							
CEQA Guidelines Update							
GHG Data Working Group							
Energy Efficiency Strategic Plan							
CalAdapt Update							
Climate Change 4th Assessment Report							
State Wildlife Action Plan							
California's Forests and Rangelands Assessment Update							

Other Partners

Federal (NOAA, CEQ, EPA, etc)

NGO partners (ICLEI, etc)

International linkages

Data and research

Indicators of progress

Regionalization

The Alliance of Regional
Collaboratives for Climate
Adaptation (ARCCA)

Progress

Regionalization

The Alliance of Regional
Collaboratives for Climate
Adaptation (ARCCA)

San Diego, Los Angeles, Bay
Area, Sacramento, OPR

Support and Funding

- Foundation Support
- Cap and Trade Revenue
- Strategic Growth Council
- Adaptation Funding Examples
 - local - special assessment districts
 - regional - joint procurement/grants
 - State - OPC LCP grants
 - federal - FEMA planning grants
- Americorp Programs/volunteerism
- ARB's Funding Wizard - www.coolcalifornia.org
- Institutionalization



Next Steps:

- Continue to focus on emissions
- Ensure long term trajectory
- Regionalization - efficient and effective
- Unique collaborations - relationships!
- Think outside the box
- Use an "everything possible" strategy
- Institutionalization - normalization

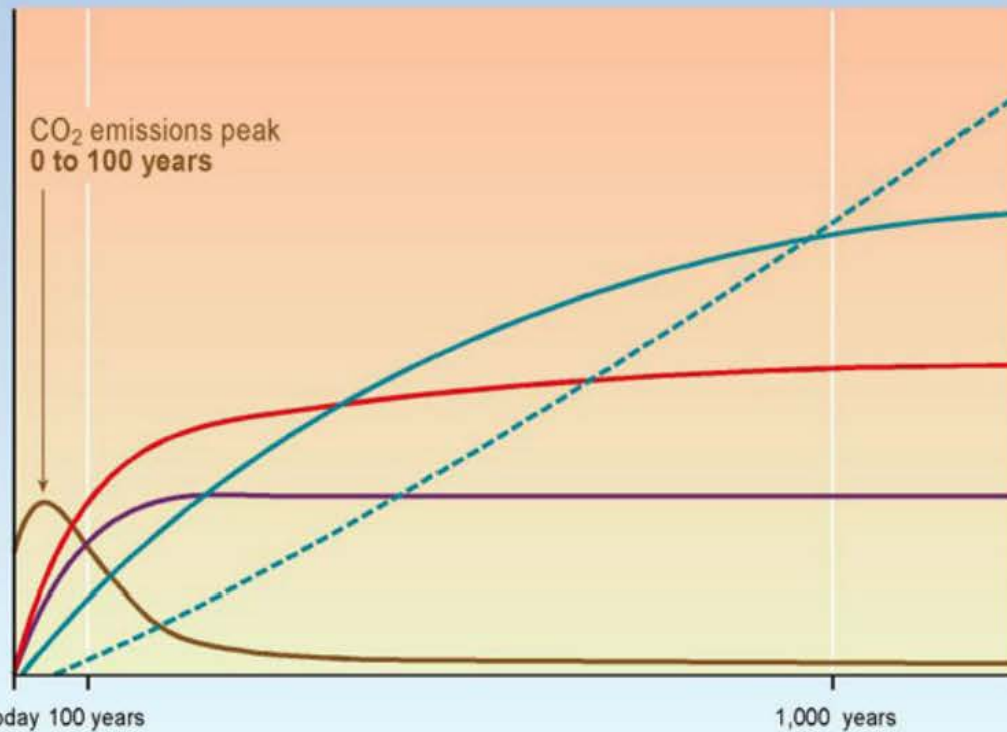
- Remember why we are doing this...



In 2100 my daughter will be 91 years old

CO₂ concentration, temperature, and sea level continue to rise long after emissions are reduced

Magnitude of response



Time taken to reach equilibrium

Sea-level rise due to ice melting:
several millennia

Sea-level rise due to thermal expansion:
centuries to millennia

Temperature stabilization:
a few centuries

CO₂ stabilization:
100 to 300 years

CO₂ emissions

INTERGOVERNMENTAL PANEL ON CLIMATE CHANGE



In 2050, California
will have
50 million people...



State Climate Change Programs

A Presentation to the CAT Public Health Workgroup

Michael McCormick, AICP

Governor's Office of Planning and Research

michael.mccormick@opr.ca.gov

www.climatechange.ca.gov

www.opr.ca.gov