

California Climate Action Team:
Public Health Workgroup (CAT-PHWG)

Mobilizing California's Public Health Sector

CAT-PHWG Meeting | October 31, 2019
California Department of Public Health
Sacramento, CA



Welcome & Introductions

Climate Change & Health Equity Program
California Department of Public Health



Dan Woo, MPH, MS
Health Program & Policy Specialist

Climate Change & Health Equity Program (CCHPEP):

Embedding health and equity in California climate action

Vision:

All Californians thrive in healthy, equitable, and resilient communities.

Mission:

Build health equity, advance climate action, and improve living conditions through policies, systems, and environmental changes.



Strategies:

- Work across agencies and departments to **embed health and equity** into California climate change programs and policies.
- **Guide state investment and resource distribution** to prioritize health equity and climate resilience.
- **Provide data, research, and tools** to identify and reduce the health effects of climate change and maximize the health equity benefits of climate action.
- **Engage with stakeholders** to increase communities' power in decision-making.
- **Increase the capacity of public health departments and partner agencies** to work on climate change and health equity.

<http://bit.ly/cchep>

Participation

During Q/A and Discussion:

- Email questions to: **CCHEP@cdph.ca.gov**
OR
- Use **Webex chat function**

Topic Overview & Framing



Linda Helland, MPH, CPH
Team Lead
Climate Change & Health Equity Program
California Dept. of Public Health



Solange Gould, DrPH, MPH
Chief, Health Equity Policy & Planning Unit
Office of Health Equity
California Dept. of Public Health

Californians are Impacted Now



Photo: American Red Cross



Photo: Michael Short / Special to The San Francisco Chronicle



Photo: reddit.com

Goals for Today's Public Health Workgroup

- Local health departments (LHDs), the health sector, and partners identify ways to immediately engage with climate change in their work places, and next steps to take collectively.
- Build relationships between government and advocacy groups working on climate change, health, and equity to identify shared goals and support climate action.

History of CA LHD work on climate change

- 9 CA LHDs received mini-grants from CDPH
- 11+ pilot LHDs received intensive TA and tools from CDPH
- CDPH has provided some TA to ~35 LHDs in CA
- Kresge funded Fresno, National City, & Los Angeles
- Los Angeles in PHI Learning Collaborative



Global, US, & CA Calls to Action on Climate, Health, and Equity

A CALL TO ACTION ON CLIMATE AND HEALTH

2018



CALIFORNIA CALL TO ACTION

ON CLIMATE, HEALTH, AND
EQUITY

2019



U.S. CALL TO ACTION ON CLIMATE, HEALTH, AND EQUITY: A POLICY ACTION AGENDA

2019



CDPH Call to Action on Climate, Health, and Equity for Local Health Departments in California

- **CDPH encourages LHDs to engage with climate change and climate change planning as a public health issue.**
 - CCHEP provides data, tools and technical assistance (TA) to LHDs to engage in mitigation and adaptation.
- **CDPH Department-Wide Climate Change and Health Initiative.**

Paths to LHD Engagement on Climate & Health

- Chronic Disease Prevention
- Built Environment
- Public Health Emergency Preparedness
- Disaster Recovery (fires, mudslides, smoke, storms)
- Environmental Health/Vector Borne Disease
- Accreditation
- Home Visiting (PHNs, Asthma, BIH, etc.)
- Healthy Homes
- Epidemiology
- Health Impact Assessments
- Women, Infants and Children
- Health Officer leadership

More info:

CDPH CalBRACE Adaptation Toolkit

<https://cdphdata.maps.arcgis.com/apps/MapSeries/index.html?appid=4093397556b4450ea563f23fcf353c64>

APHA and PHI “Climate Change, Health, and Equity: A Guide for Local Health Departments”

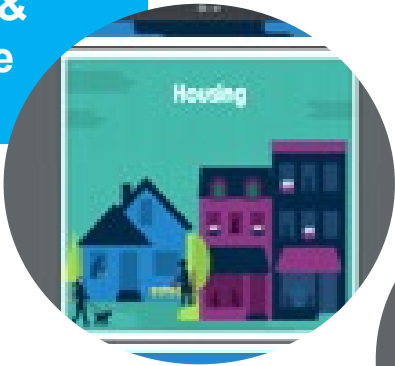
<https://www.apha.org/topics-and-issues/climate-change/guide>



A Health, Climate, and Equity in All Policies Approach

A Healthy Community is...

Healthy, energy efficient, & affordable housing!



Green spaces for recreation!



Urban and community greening to keep cities cool.



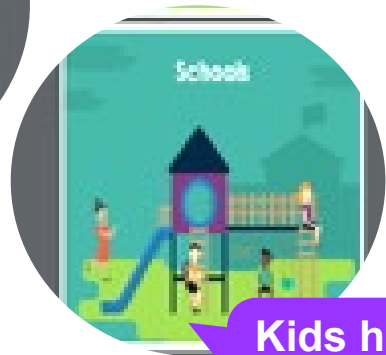
Where there are good jobs and safe neighborhoods.



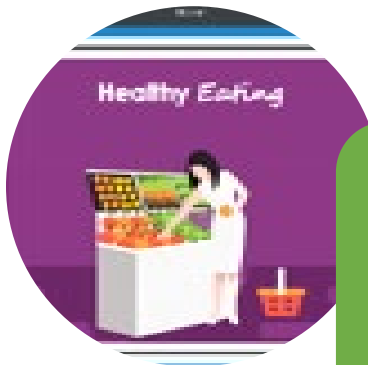
Healthy built environment including walkable & bikeable communities!



Kids have safe places to play and learn.



Access to affordable, healthy foods.



Where people know and care for one another.



A Low-Carbon, Climate-Resilient Community

Images adapted from ChangeLab Solutions http://www.changelabsolutions.org/publications/HiAP_Collaborative-Health

Speaker:



Linda Rudolph
Director
Center for Climate Change and Health
Public Health Institute

Climate Change is a Health Emergency



COP24 SPECIAL REPORT

HEALTH & CLIMATE CHANGE

U.S. Global Change Research Program

Fourth National Climate Assessment



Volume II
Impacts, Risks, and Adaptation in the United States
Report-in-Brief

ipcc

Global Warming of 1.5°C

An IPCC special report on the impacts of global warming of 1.5°C above pre-industrial levels and related global greenhouse gas emission pathways, in the context of strengthening the global response to the threat of climate change, sustainable development, and efforts to eradicate poverty.



- Climate change is impacting our health now
- The warmer it gets, the worse the health impacts
- We need to reduce emissions **and** adapt to climate change
- Failure to take urgent action risks catastrophic effects on human health and well-being.
- There's hope: climate action is huge opportunity to improve living conditions and health.
- A “climate, health, and equity-in-all-policies” approach is required.

LANCET COUNTDOWN:
TRACKING PROGRESS
ON HEALTH AND
CLIMATE CHANGE

Resources Needed: Climate Change & Health Equity Movement



Building Partnerships with Climate and Health Advocates

- Build alliances with community partners to protect against push-back or risk aversion, ensure accountability, and build community power in decision-making.
- Invest in long-term relationships with the leadership of grassroots and advocacy organizations whose activities and campaigns advance climate, health, and equity.
- Create a culture of co-learning, reflection, and transparency about department and community realities and needs to build trust between government and community partners.

Building Partnerships with Climate and Health Advocates

- Partner with communities experiencing climate related inequities in ways that share decision-making:
- Identify strategic opportunities for advocacy groups to contribute their expertise and knowledge. (e.g, B-30-15 Equity and Vulnerable Communities sub-comm)
- Co-develop and promote a shared agenda, narrative, and resources to advance climate and health equity. (e.g., APEN Mapping Resilience, CEJA SB 1000 Toolkit)
- Come up with shared strategy on how to advance climate, health, and equity solutions using each entities unique role and powers.
 - What do advocates need to know about what is and is not working in government? Government resources or data?
 - What does government need to know about what is and is not working for communities? Community knowledge, power, advocacy?

Speaker:



Martha Dina Argüello
**Executive Director, Physicians for Social
Responsibility - Los Angeles**

Speaker:



Jenny Bard
Director, Health Partnerships
Advocacy and Public Policy
American Lung Association in California

Speaker:



Rohan Radhakrishna
Deputy Health Officer & Improvement Advisor
Contra Costa Health Services
County of Contra Costa

Discussion Facilitators:

Rohan Radhakrishna
Contra Costa Health Services

Linda Rudolph
Public Health Institute

Remote Participant Questions:

Email CCHEP@cdph.ca.gov OR Use WebEx chat function

Meeting Closing / Wrap-Up



Solange Gould, DrPH, MPH
Chief, Health Equity Policy & Planning Unit
Office of Health Equity
California Dept. of Public Health

California Climate Action Team:
Public Health Workgroup (CAT-PHWG)

Mobilizing California's Public Health Sector

CAT-PHWG Meeting | October 31, 2019
California Department of Public Health
Sacramento, CA

Thank you!

