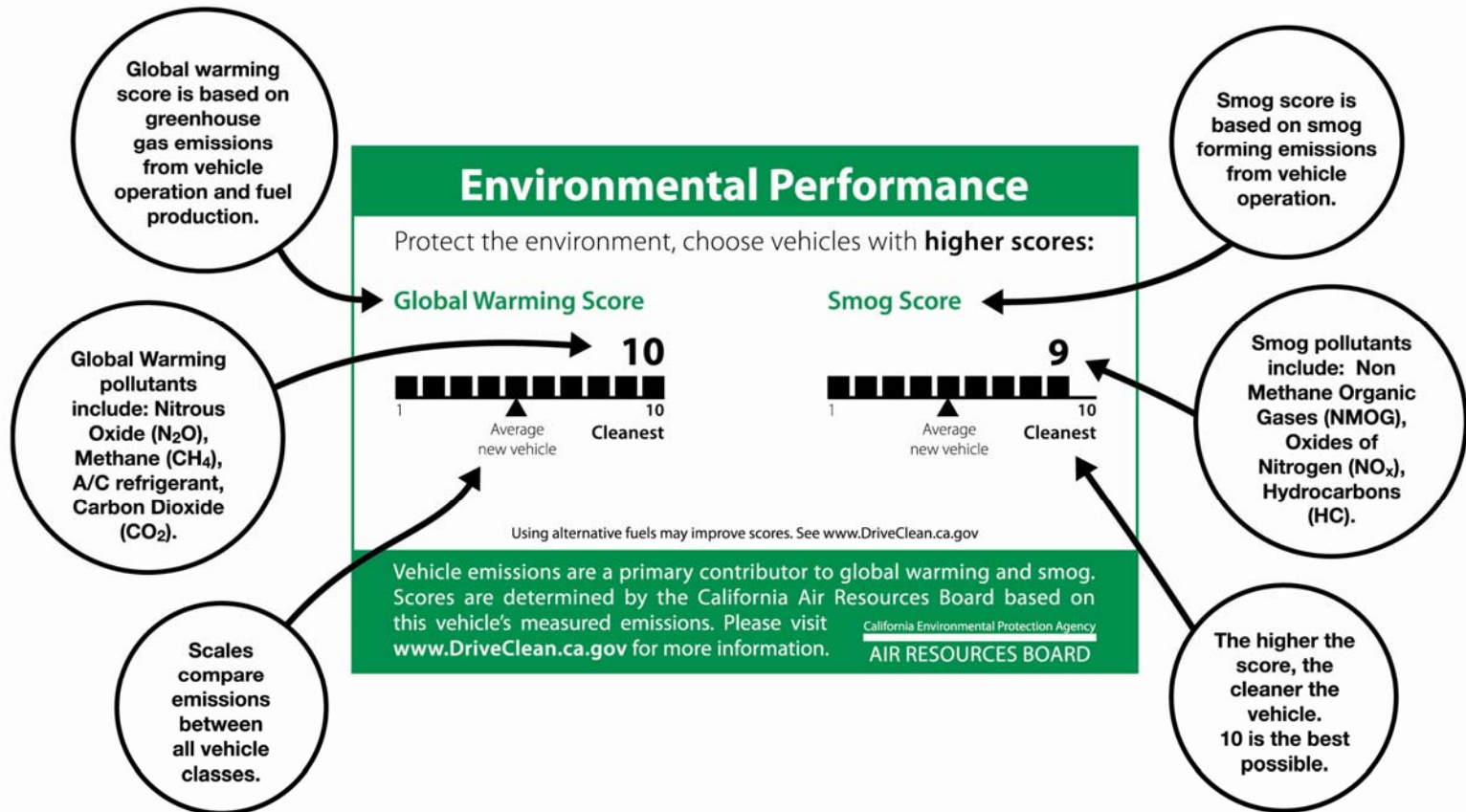


Environmental Performance Label



Background

- EP Label is the result of Assembly Bill 1229 (Nation) signed into law in 2005
- Required on all new cars manufactured after January 1, 2009
- Provides a Smog Score and Global Warming Score for each car
 - Both scores are from 1 to 10
 - 10 being cleanest
 - 5 being the average
- Scores represent the entire range of emissions over all vehicle classes and sizes

Smog Score Development

- The California and Federal emissions standards were combined into one table
- The emission standards were then distributed into 10 different levels
- A score from 1 to 10 was assigned to each level

Current Smog Scores

Smog Score	Emission Certification	NMOG +NOx Emissions (g/m)
10	ZEV, Bin 1	0.000
9	AT PZEV, PZEV	0.030
8	SULEV, Bin 2	0.030
7	Bin 3	0.085
6	Bin 4	0.110
5	LEV 2 ULEV	0.125
4	LEV 2 LEV, Bin 5	0.160
3	Bin 6	0.190 – 0.200
2	SULEV (MDV), Bin 7	0.240
1	LEV 2 ULEV (MDV), LEV 1 ULEV, Bin 8a	0.325

Adjustments to Smog Scores

- Adjustments to the Smog Scores will align with new LEV III criteria pollutant standards
- The standards would be divided into 10 levels with a Smog Score assigned to each level

Proposed Smog Scores – 2014

Proposed Smog Score	Proposed Emission Certification	Proposed NMOG +NOx Emissions (g/m)
10	ZEV, Bin 1	0.000
9	SULEV20 with extended warranty	0.020
8	SULEV20	0.020
7	SULEV, Bin 2	0.030
6	ULEV50	0.050
5	ULEV70, Bin 3	0.070 – 0.085
4	ULEV, Bin 4	0.110 - 125
3	SULEV (MDPV 8,500 – 10,000)	0.145
2	LEV	0.160
1	ULEV (MDPV 8,500-10,000 and 10,001 – 14,000), SULEV (MDPV 10,001 – 14,000), Bin 6	0.200 – 0.317

Other Proposed Modifications and Considerations

Global Warming Scores

- We will propose modified GW scores once new greenhouse gas standards are proposed

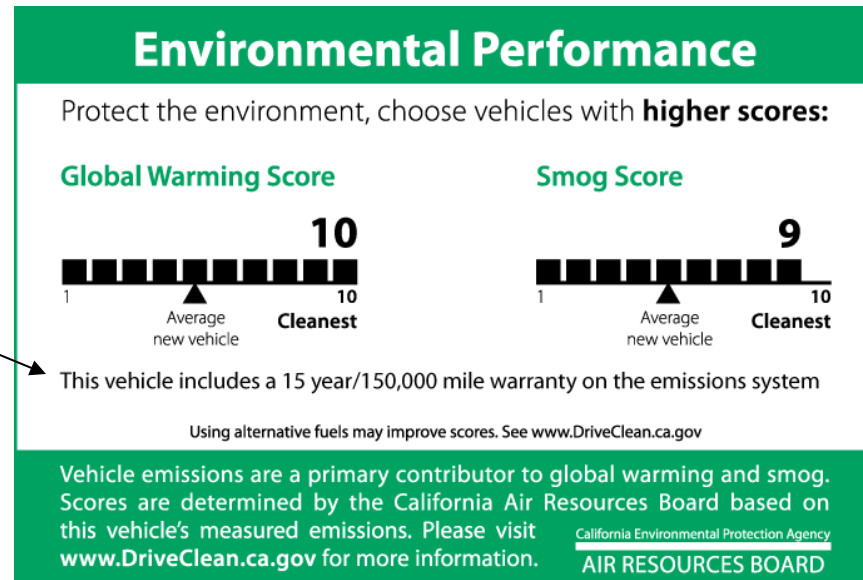
Current Global Warming Scores

Global Warming Score	CO₂ Grams per Mile
10	Less than 200
9	200-239
8	240-279
7	280-319
6	320-359
5	360-399
4	400-439
3	440-479
2	480-519
1	520 and up

Warranty Information

- In addition to the proposed 0.005 g/m credit given to cars with an extended warranty
- Propose adding extended warranty information to the EP Label

Example of a warranty statement



Improved Data Collection

- The EP Label scores are a key component of the DriveClean.ca.gov web site
- Currently the scores come separately and in different formats
- We need to investigate ways to make this data collection more consistent so that it can be easily submitted to the Drive Clean data base

Search & Explore

By Make/Model

By Category

By Technologies & Fuel Types

By Smog Score

By Global Warming Score

By Engine Family

Calculate Savings

By Incentives

By Driving Habits & Fuel Costs

By Vehicle Comparison

Tools & Calculators

Search Results by Technologies & Fuel Types

View 2010

Find out more about California's EP Label

Create a side-by-side comparison of the potential costs, savings and environmental impacts. Choose up to three vehicles below and select the Compare button to continue.

Image	Make/Model	Technologies & Fuel Types	Global Warming Score	Smog Score	Incentives	MSRP	Compare
	2010 Honda CIVIC HYBRID 1.8L 4-CYL. Automatic	Hybrid Electric	10 10/10	9 10/10	✓		<input type="checkbox"/>
	2010 Honda INSIGHT 1.8L 4-CYL. Automatic	Hybrid Electric	10 10/10	9 10/10	✓	\$19,000.00	<input type="checkbox"/>
	2010 Toyota PRIUS 1.8L 4-CYL. Automatic	Hybrid Electric	10 10/10	9 10/10	✓	\$22,000.00	<input type="checkbox"/>
	2010 Honda INSIGHT 1.8L Automatic	Hybrid Electric	10 10/10	7 10/10	✓	\$19,000.00	<input type="checkbox"/>
	2010 Ford FUSION HYBRID 2.5L 4-CYL. Other	Hybrid Electric	9 10/10	9 10/10	✓	\$22,000.00	<input type="checkbox"/>
	2010 Mercedes-Benz C400 HYBRID 3.5L	Hybrid Electric	9 10/10	9 10/10	✓		<input type="checkbox"/>
	2010 Mercury MILAN HYBRID 2.5L 4-CYL. Other	Hybrid Electric	9 10/10	9 10/10	✓	\$27,000.00	<input type="checkbox"/>

Incorporation of SmartWay concept



- SmartWay is the US EPA Label for the cleanest of the clean cars
- Would clearly identify cleanest cars to consumers
- More details on this proposal to come

Questions/Comments

- Contact Lisa Chiladakis at Ichilada@arb.ca.gov or at 916-327-2932
- Web sites
 - www.driveclean.ca.gov
 - www.arb.ca.gov/msprog/labeling/labeling.htm