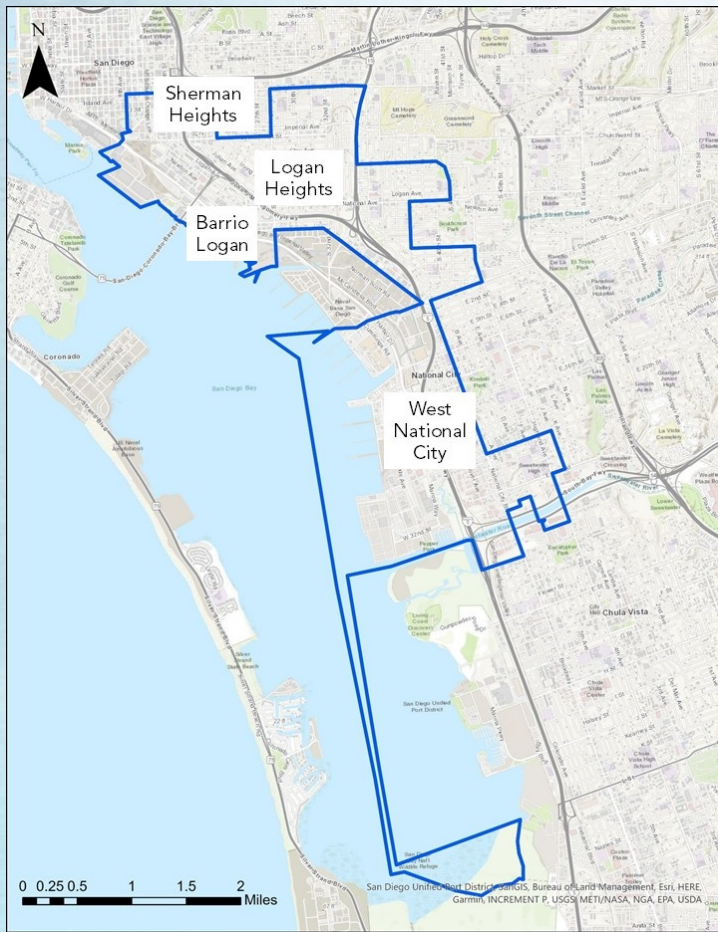




# **Consideration of the Community Emissions Reduction Program for the Portside Environmental Justice Neighborhoods**

October 14, 2021



# Key Strengths

- Quick and successful transition to virtual meetings during the development phase
- Formation of four subcommittees
- Inclusion of several land use strategies
- Participatory budgeting exercises led by the District
- Overall Goals for the CERP

# Examples of CARB Actions

Portside Community cancer risk modeling from toxic air contaminants

Technical support to the district and community steering committee

CARB Statewide measures benefitting the Portside Community

# Recommended Actions to Strengthen Implementation

Staff identified areas for CARB, the Air District, and steering committee to work together on:

Updating the Community Planning Emissions Inventory

Community-Level Air Monitoring Efforts

Recommendations from lessons learned during development will help future communities during the planning process

# Community Planning Emissions Inventory

## Background

- Ensuring best available data is used
- Found and corrected error in emissions inventory
- Minimal time to review corrections before CSC voted on approving CERP

## Recommended Actions

- Updating inventory as new methodology becomes available
- Providing sufficient time to review and understand updates

# Community-Level Air Monitoring Efforts

## Background

- Initial setbacks in contracting and equipment procurement and siting
- New and existing members in CSC desire better understanding of monitoring efforts

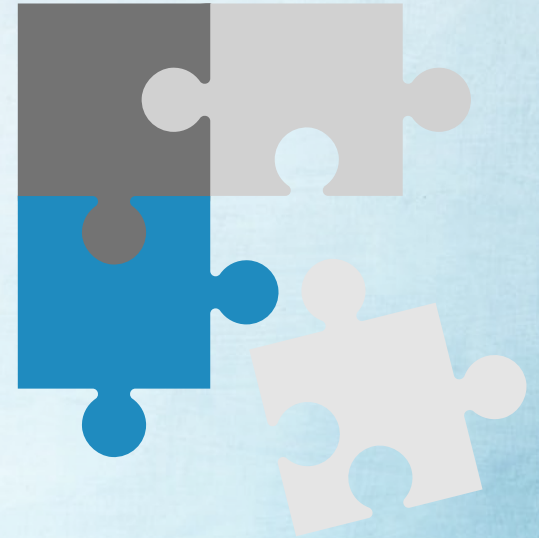
## Recommended Actions

- Providing air monitoring information in an accessible manner
- Tracking CERP progress through Community Air Monitoring Plan efforts

# CARB Commitment

## Be Proactive in:

- Offering expertise and accessible technical information to support and oversee implementation
- Supporting exchanges across AB 617 communities that are pursuing similar implementation strategies



# Staff's Recommendation

- Approve the Portside Environmental Justice Neighborhoods Community Emissions Reduction Program
- Direct CARB staff, the Air District and community steering committee to work together to strengthen implementation
- Direct the Air District to include progress updates on identified actions in annual reports

