

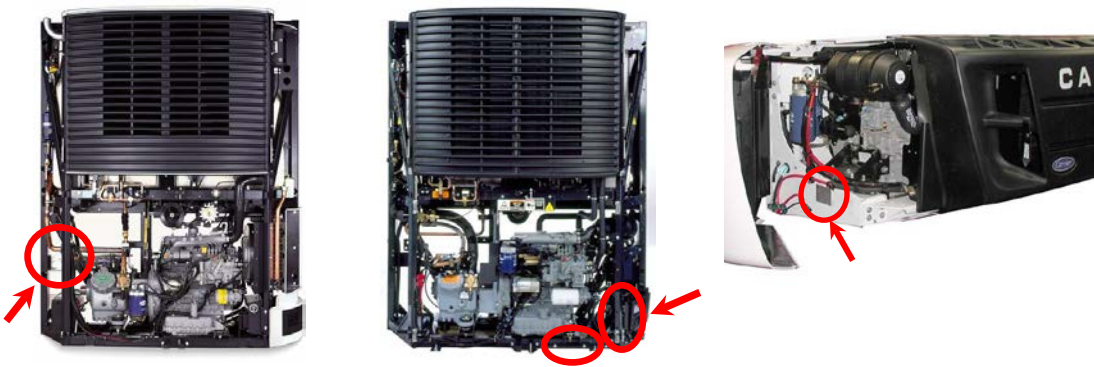


Carrier TRU Reporting For ARB Equipment Registration (ARBER)

Per TRU Advisory 08-06, you need the unit make, model, model year and serial number to register the TRU. Registration is mandatory for California based fleets and voluntary for non-California based fleets.

STEP 1: ID your Fleet

Locating the TRU Serial Number



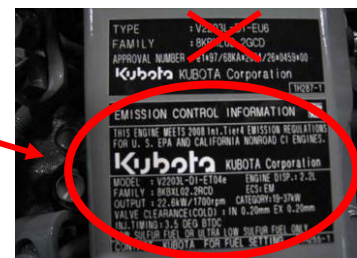
Unit Serial Number Label

STEP 2: ID your Engine

Locating the Engine Emissions Labels



Emissions Labels



STEP 3: Register with CARB

Fill Out: TRANSPORT REFRIGERATION UNIT ATCM MODEL-ENGINE-COMPLIANCE INFORMATION FORM SSD/EAB-FORM #TRU-MEC (#30)

http://www.arb.ca.gov/arber/documents/trudocs/tru_mec_05_09.pdf

Enter TRU Unit Information

TRU/TRU Generator Set Unit Information

*indicates required field

Provide TRU/TRU Generator Set unit information here. Do not provide engine information on this page. The engine information must be entered on the compliance information page (page 3 of this form).

TRU/TRU Generator Set Unit Type* TRU TRU Generator Set

TRU/TRU Generator Set Unit Manufacturer*	Carrier Transicold
TRU/TRU Generator Set Unit Model*	
TRU/TRU Generator Set Unit Model Year*	
TRU/TRU Generator Set Unit Serial Number*	
TRU/TRU Generator Set Unit ID	Leave blank - N/A for Carrier

Use the TRU serial number to determine the model year.

Sample Serial Number: **ABC12345678**

If the 1 st digit is	and the 3 rd digit is	TRU Model Year is
A thru G	A thru Z	2001 or earlier
H	A thru M	
H	N thru Z	2002
J	A	2003
J	B thru N	
J	P thru Z	2004
K	A or B	2005
K	C thru P	
K	R thru Z	2006
L	A thru C	2007
L	D thru R	
L	S thru Z	2008
M	A thru D	2009
M	E thru S	
M	T thru Z	2010
N	A thru E	2011
N	F thru T	
N	U thru Z	2012
P	A thru F	2013
P	G thru U	
P	V thru Z	2014
R	A thru G	2015
R	H thru V	
R	W thru Z	2016
S	A thru H	



Unit Serial Number Label

TRU Engine Information (all fields required)

TRU Engine Manufacturer

Kubota

Power Rating

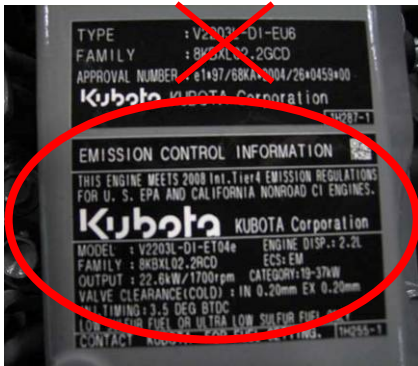
<25HP (<19kW)

≥25HP (≥19kW)

TRU Engine Model

TRU Engine Model Year

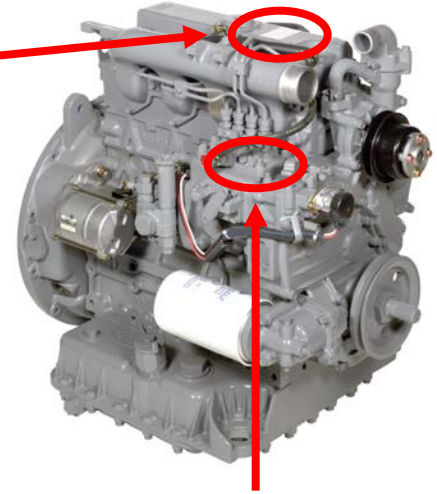
TRU Engine Serial Number



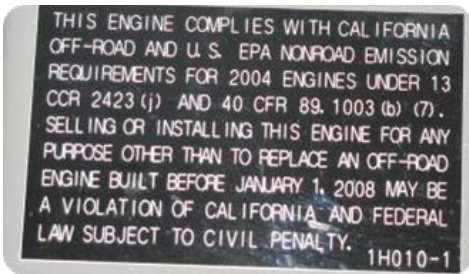
Engine Model, Model Year & Power Rating



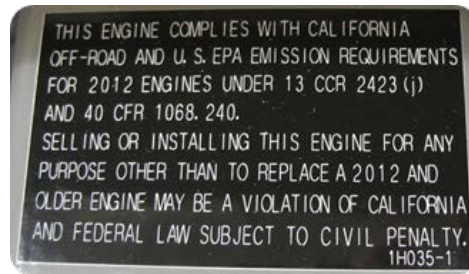
Serial Number



Alternate Serial Number location Stamped on engine block



Engines incorporating this REPLACEMENT ENGINE label on the valve cover are Tier 2 engines and are considered a 2007 Engine Model Year regardless of engine build year.



Engines incorporating this REPLACEMENT ENGINE label on the valve cover are Tier 4i engines and are considered a 2012 Engine Model Year regardless of engine build year.

STEP 4: Contact your local Carrier Transcold Dealer

www.carrier.com/truck-trailer

www.carrier.com/performance-parts

